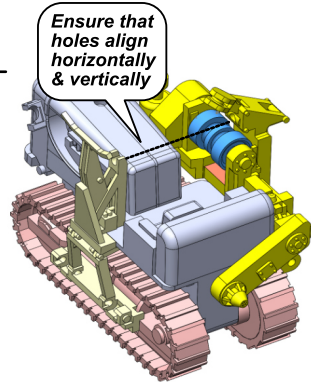
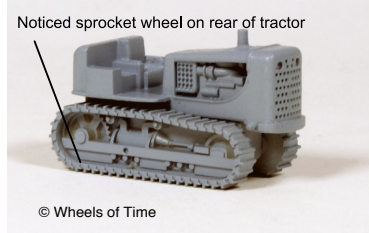
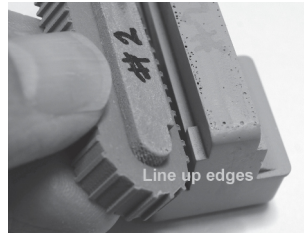
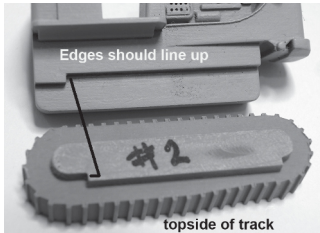


General Instructions

1. Wash body & tracks in soap water to remove any release agent; Wash 3D parts in 'Simple Green' & warm water (50:50); Lightly scrub with toothbrush; Use toothpick to remove wax. Rinse and completely dry.
2. Spray primer - Tamiya Surface Primer or Tamiya XF-53 flat gray. Provides uniform surface color & texture, and "teeth" for paint to adhere.
3. Paint parts yellow. HD-21 Side Boom Tractors were yellow. Tamiya TS-47 chrome yellow (dull yellow) or Tamiya X-8 lemon yellow (bright); Exhaust pipe - brown, silver or aluminum.
4. Test fit parts to make sure you have clearances on parts.
5. Assembly instructions, see below.
6. Stringing "cable" instructions, see next page.
7. Apply decal. Cut decal as close to lettering as possible. Use Micro Sol; Spray clear coat to protect decals.

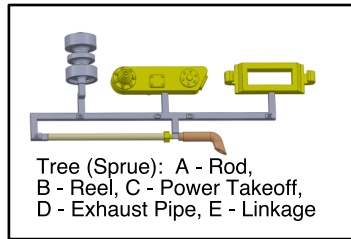
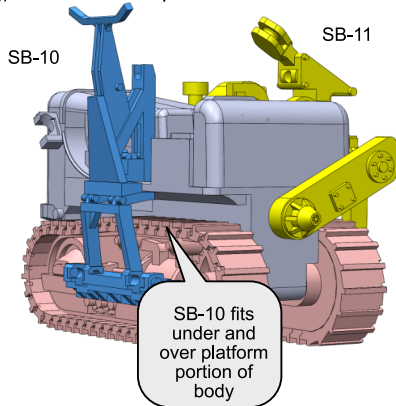


Assembly Instructions

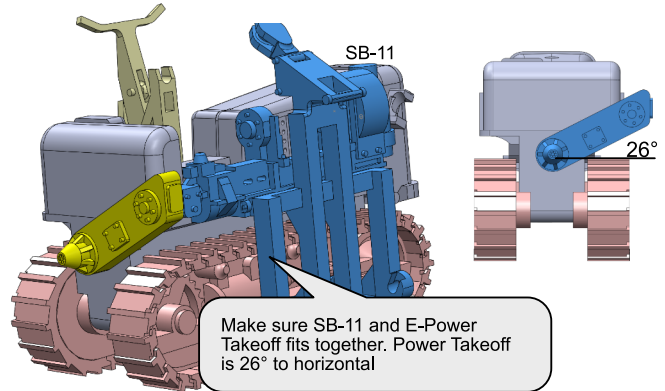
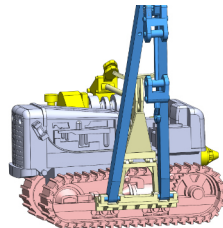
Always test fit parts especially where paint may build up in areas affecting clearances. Use CA (thin) and CA (thick)

*** Steps ***

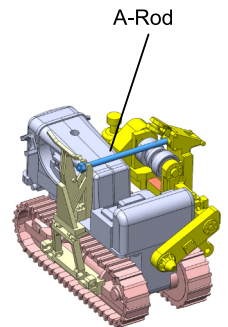
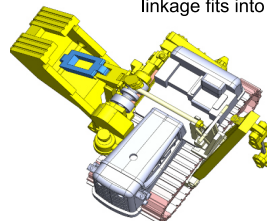
- a) Body & Tracks: Align and Glue (CA thick) Tracks to Main Body.
- b) SB-11, SB-10, E-Power Takeoff: Align and Glue to Main Body and Tracks.
- IMPORTANT! Do not install A-Rod and B-Reel at this stage!**
- c) SB-Boom: Install in receiving slot in SB-10.
- d) SB-12 Counterweight & E-Linkage. Install on SB-11.
- e) D-Exhaust Pipe: Glue in place on hood of body.
- f) Add "cables" to Side Boom Tractor - See page 3.
- g) A-Rod: Glue in place. **This is the last assembly step after attaching cables.**



Boom with hook & pulley fits into SB-10



SB-12 Counterweight with E linkage fits into SB-11



Placement of Decals

- a) All tractors were painted yellow and not orange.
- b) Prototype photos show a range of placement of markings as well as style of logos. Below diagram seems to be "standard".

